

# ***AmpleHarvest.org & Feds Feed Families***



**Gary Oppenheimer**  
**gary@AmpleHarvest.org**



# *AmpleHarvest.org & Feds Feed Families*

## **America's Gardeners**

*(especially federal employees)*

## **Ending Senior Hunger**

## **And**

## **The Waste of Surplus Harvests**

Gary Oppenheimer  
gary@AmpleHarvest.org

**In EVERY Community In America**

**There Are Two Audiences....**

# ~~42~~ 62! Million Home & Community Gardeners



40% of All Households

# 2.1 million Federal Employees



# 840,000 Home & Community Gardeners





Gardeners Harvest Enough Surplus To Feed 28 Million People

~~40~~ 42! million food insecure people



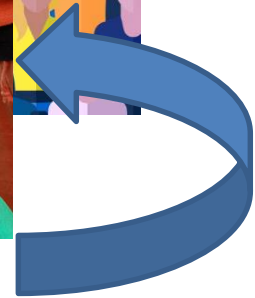


~~40~~ 42! million food insecure people



5.3 million are seniors.





## The past:

“Jars, Cans, Boxes – ***No Fresh Food***”

Chokepoint in our food system



203 Food Banks Nationwide

33K Pantries

42M Hungry People



**SOLVED**

“Jars, Cans, Boxes –

Chokepoint in our food system



203 Food Banks Nationwide



33K Pantries



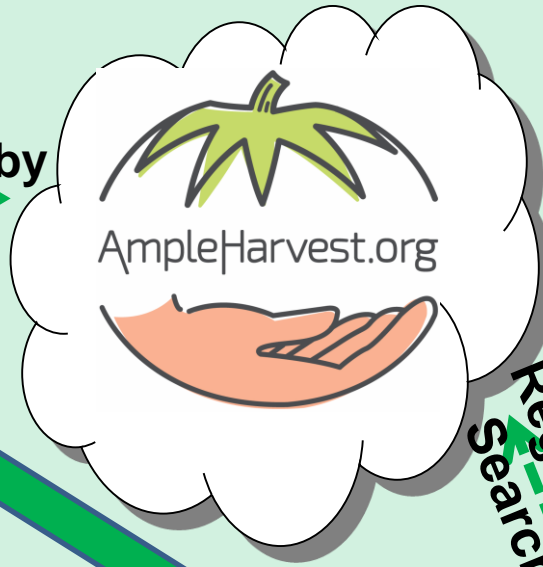
42M Hungry People



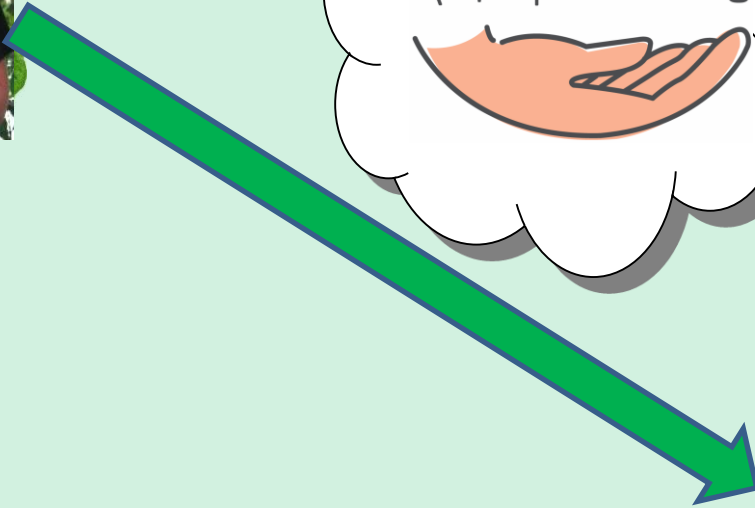
62M home growers



Find A Nearby  
Pantry



Register to be  
Searchable



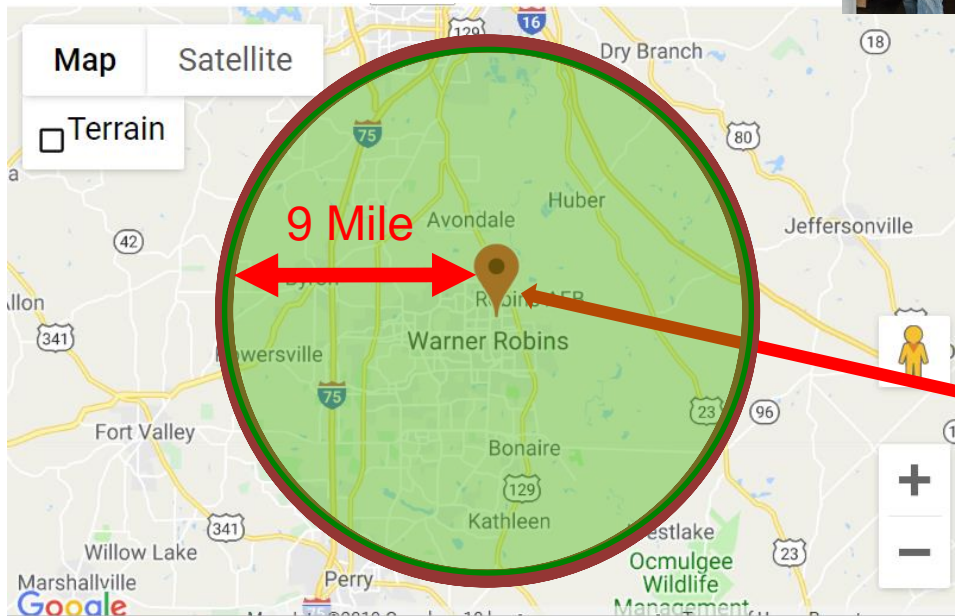
42M Hungry People

203 Food Banks Nationwide

Time



# Anytown, USA



## Is There An AmpleHarvest.org Food Pantry Near Me?



**Nearly 9,000 food pantries, in 4,200 communities across all 50 states**



Since 2014...

[www.AmpleHarvest.org/FFF](http://www.AmpleHarvest.org/FFF)

A screenshot of the FFF website interface. At the top is the "Feds Feed Families" logo, which consists of a green bowl filled with yellow leaves and the letters "FFF" inside. Below the logo is the text "Find A Food Pantry Accepting Fresh Food Donations" in orange, followed by "Got Questions? [Check our FFF FAQ here.](#)" in black. Below this is a search form with "Your Location:" followed by a text box containing "20036", "Radius (miles):" followed by a dropdown menu showing "25", and a "Search Locations" button. The main content area is split into two columns. The left column lists five food pantries with their names, distances, addresses, and "More Information and Directions" links. The right column shows a map of the Washington, DC area with several red location pins. The map includes labels for Rockville, North Bethesda, Bethesda, College Park, Tysons, Washington, Alexandria, and Fairfax, along with major highways like 495, 29, 50, 395, 620, 286, 644, 611, 210, 5, and 301. The map data is attributed to ©2015 Google.

**Miriam's Kitchen** (0.9 miles)  
2401 Virginia Avenue NW, Washington, DC  
[More Information and Directions](#)

**Bread for the City** (1.0 miles)  
1525 Seventh Street, NW, Washington, DC  
[More Information and Directions](#)

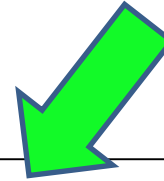
**Joseph's House** (1.2 miles)  
1730 Lanier Place, NW, Washington, DC  
[More Information and Directions](#)

**So Others Might Eat** (1.6 miles)  
71 O Street NW, Washington, DC  
[More Information and Directions](#)

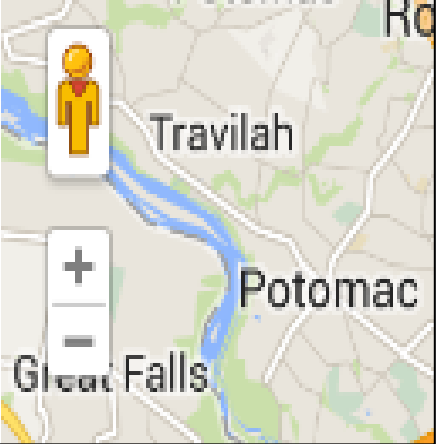
**Father McKenna Center** (1.6 miles)  
19 Eye Street NW Washington, Washington, DC  
[More Information and Directions](#)

**DC Central Kitchen** (1.7 miles)  
425 2nd Street NW, Washington, DC

Where do you live?

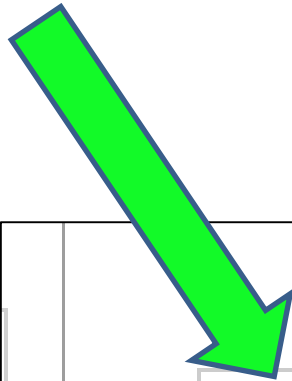


Your Location:	20036	Radius (mi)
----------------	-------	-------------

The map shows a section of the Potomac River valley. A yellow person icon is placed on the map, corresponding to the ZIP code 20036. Labels for 'Travilah', 'Potomac', and 'Great Falls' are visible on the map. A vertical zoom control bar is on the left side of the map.

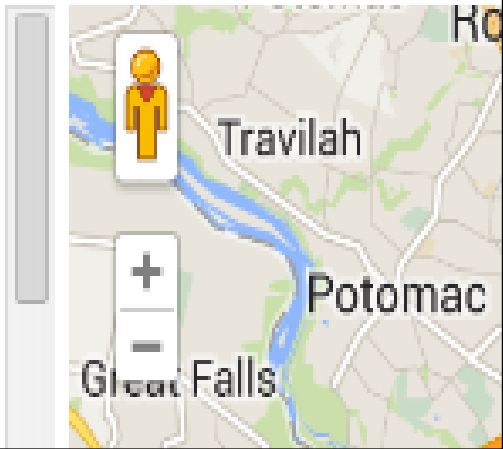
Click More Information and Directions



Your Location:  Radius (0)

**Miriam's Kitchen (0.9 miles)**  
2401 Virginia Avenue NW, Washington, DC  
[More Information and Directions](#)

**Bread for the City (1.0 miles)**  
1525 Seventh Street, NW, Washington, DC  
[More Information and Directions](#)



## Food Pantry Information



### Food Pantry Information

## Donation Days/Times

If you believe as we do in *No Food Left Behind*, then [click here to support our](#)

#### Miriam's Kitchen

2401 Virginia Avenue NW  
Washington, DC 20037

Contact: John Murphy  
Phone: 2024528926  
Fax: 2028358376

Email: [john@miriamskitchen.org](mailto:john@miriamskitchen.org)  
Website: [www.miriamskitchen.org](http://www.miriamskitchen.org)

Donation Days/Times: Monday-Friday 6 am-6 pm

State Cooperative Extension:  
[http://www.udc.edu/cooperative\\_extension/coop\\_ext.htm](http://www.udc.edu/cooperative_extension/coop_ext.htm)

Yes

[Print a FFF/Tax Receipt For Your Fresh Food Donation](#)



Take the food to the pantry when you harvest more than you can use, preserve or share with friends.

Continue for as many years as you continue to garden.

### Food Pantry Information



### Food Pantry Information

If you believe as we do in *No Food Left Behind*, then [click here to support our work](#).

#### Miriam's Kitchen

2401 Virginia Avenue NW  
Washington, DC 20037

Contact: John Murphy

Phone: 2024528926

Fax: 2028358376

Email: [john@miriamskitchen.org](mailto:john@miriamskitchen.org)

Website: [www.miriamskitchen.org](http://www.miriamskitchen.org)

Donation Days/Times: Monday-Friday 6 am-6 pm

State Cooperative Extension:

[http://www.udc.edu/cooperative\\_extension/coop\\_ext.htm](http://www.udc.edu/cooperative_extension/coop_ext.htm)

Your Address

[Get Directions](#)

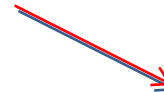
[Print a FFF/Tax Receipt For Your Fresh Food Donation](#)

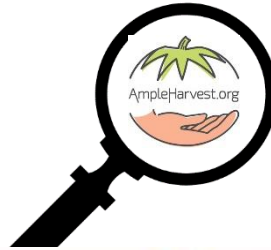


# Food Drive

# Food Bank

# Food Pantries





## Solving Food Waste

Most gardeners, given the opportunity, are eager to donate that food to help the community yet never knew that they could - or where to take it.

## Solving Hunger

Food pantries nationwide never knew that they could accept locally grown fresh food, and never knew that the gardeners were eager to donate it.



## Important Points

- No donation is too small
- Fresh food donations protected by federal law
- Donations can continue after FFF ends
- Donations are tax deductible



## More Important Points

- COVID-19 safety guidance available
- Social Distancing built into the model
- Fresh food donations more important than ever for health, immunity and recovery
- Promotes community engagement.





## For FFF Champions:

Guide: [AmpleHarvest.org/FFFguide](https://AmpleHarvest.org/FFFguide)

Office Poster: [AmpleHarvest.org/FFFposter](https://AmpleHarvest.org/FFFposter)

## For ALL Growers

★ Donating Food: [AmpleHarvest.org/FFF](https://AmpleHarvest.org/FFF) ★

FAQ: [AmpleHarvest.org/FFFFAQ](https://AmpleHarvest.org/FFFFAQ)

Reporting Donations: [AmpleHarvest.org/FFFreport](https://AmpleHarvest.org/FFFreport)

*Learn More at*

[AmpleHarvest.org/TED](https://AmpleHarvest.org/TED) & [AmpleHarvest.org/CNN](https://AmpleHarvest.org/CNN)



# Questions?

## Additional Resources

Looking to **start gardening** or expand your garden?  
Bonnie Plants and AmpleHarvest.org have the perfect  
solution for you:

<https://bonnieplants.com/gardening/grow-more-feed-more/>

Looking to **help more food pantries** in your community  
benefit from AmpleHarvest.org?

Visit [www.AmpleHarvest.org/local](http://www.AmpleHarvest.org/local)



# Questions?